

Tool Safety

Toolbox Talk



Hazards

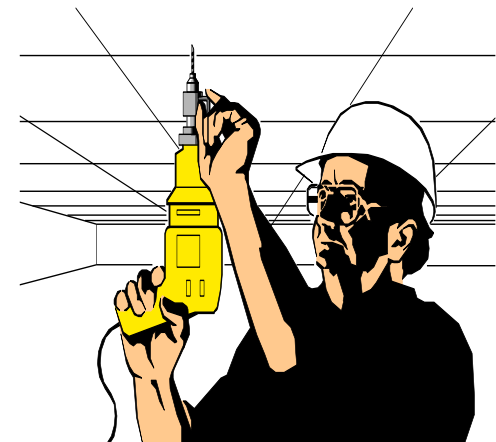
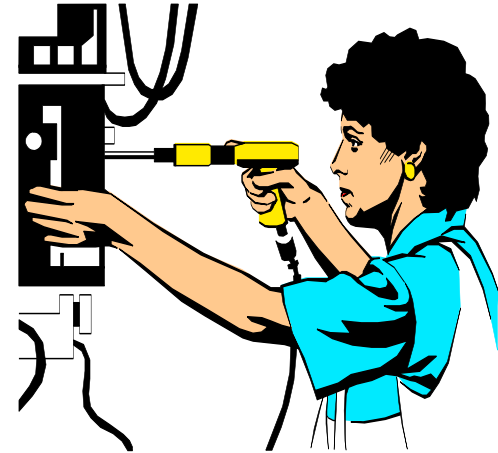
Workers using hand and power tools may be exposed to these hazards:



- Objects that fall, fly, are abrasive, or splash
- Harmful dusts, fumes, mists, vapors, and gases
- Frayed or damaged electrical cords, hazardous connections and improper grounding
- Vibration and impact

Injuries from working with hand and power tools

- Electric shock
- Flash burns
- Falling
- Hand and Eye injuries
- Hearing loss
- Crushing, cuts or
losing a body part
- Ergonomic injuries



Basic Tool Safety Rules

- Maintain regularly
- Inspect before use
- Use the right tool for the job
- Operate according to manufacturers' instructions
- Use the right Personal Protective Equipment (PPE)
- Use guarding



Hand and power tool safety

❖ Hand tool hazards

Hazards are usually caused by misuse
Improper maintenance

Do not use

- wrenches when jaws are sprung
- impact tools (chisels and wedges) when heads have mushroomed
- tools with loose, cracked or splintered handles
- a screwdriver as a chisel
- tools with taped handles – they may be hiding cracks



Hand and power tool safety

❖ Hand Tools – Protection

- Keep floor surface where working free from debris and tripping or slipping hazards
- Keep cutting tools sharp
- Use tools as they were intended to be used
- Use Personal Protective Equipment (PPE), such as safety glasses and gloves
- PPE determined by Job Hazard Analysis (JHA)



Hand and power tool safety

❖ Power tools

- Must be fitted with guards and safety switches
- Extremely hazardous when used improperly
- Different types, determined by their power source:

- Electric
- Pneumatic
- Liquid fuel
- Hydraulic



Hand and power tool safety

❖ Power Tools – Precautions

- Disconnect tools when not in use, before servicing and cleaning, and when changing accessories
- Keep people not involved with the work away from the work
- Secure work with clamps or a vise, freeing both hands to operate the tool
- Don't hold the switch button while carrying a plugged-in tool
- Keep tools sharp and clean
- Remove damaged electric tools & tag them: "Do Not Use"

Wrong practice



Reporting Accidents/Injuries

- First priority is to receive prompt medical attention (call 112)
- Report all work-related accidents, injuries or illnesses to your supervisor
 - Regardless of severity
- Paperwork to be filled out according to the local legislation, e.g.
 - Report to the appropriate authorities
 - Keep Records
 - Prepare and submit an Incident Report

BIBLIOGRAPHY

- *Hand & Power Tool Safety, Osha Office of Training & Education*
- *Hand & Power Tools Toolbox Talk, Harvard Campus Services EHSE Management*

ANY QUESTIONS?

**THANKS FOR
YOUR PARTICIPATION!!!**