

An example of good maintenance practice

Foreword

- The operation of most devices begins with a power connection
- It is necessary to give attention to the main power supply cabin maintenance
- It should not bear any mechanical damage
- The door lock must be functional
- Periodic dust removal is necessary - must be recorded
- The inspection is carried out by an authorized person
- The Industry 4.0 tools allow for continual state detection

Power outage due to lack of maintenance



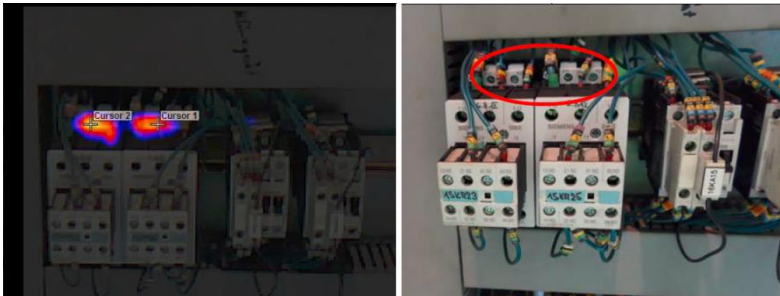
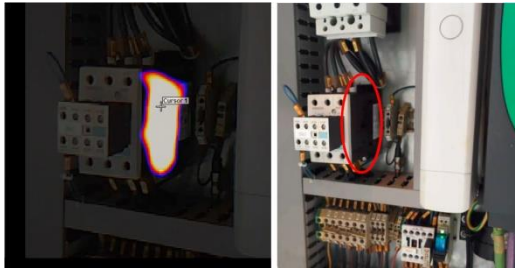
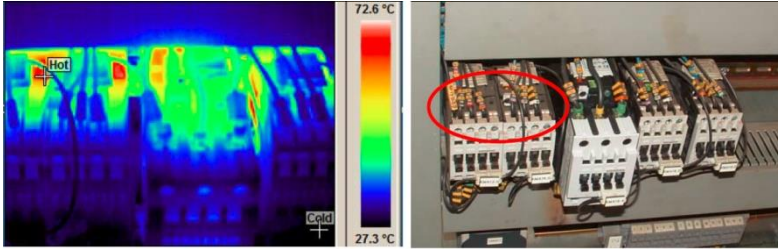
- Fire at a main panel of the factory that resulted in work stoppage

Record of parts' replacement



- Good practice: recording of the preventive maintenance date or electrical part replacement

Using thermal imaging - Transition resistance



- Annual thermal imaging to early detect electrical parts overheating → failure; as one can see visual inspection is not enough

Detection devices -4.0



- A smart detector (middle) detects the combination temperature/ smoke/ fire rise and gives a signal to release the extinguishing media in the problematic area

Advantages of continuous detection

- Continuously monitors :
 - Temperature - signaling
 - The occurrence of smoke - signaling
 - Detect ignition – signaling, disconnects from the voltage, extinguishing inert gas
 - Signaling always by sound, bell and message to designated mobiles
 - All switch boxes were categorized and classified into 3 categories in which this detection system is going to be installed.